



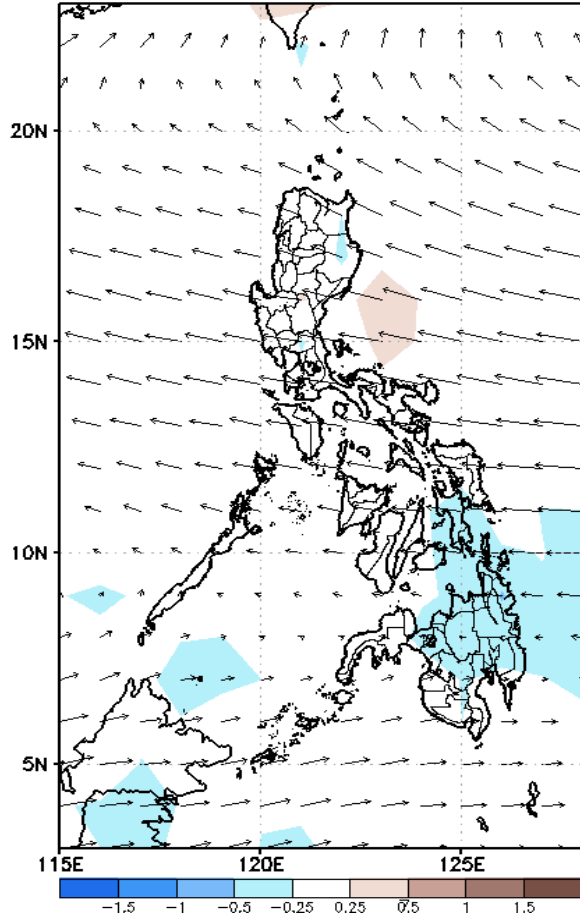
Week 1 & Week 2 Forecast for the Philippines using GEFS Model



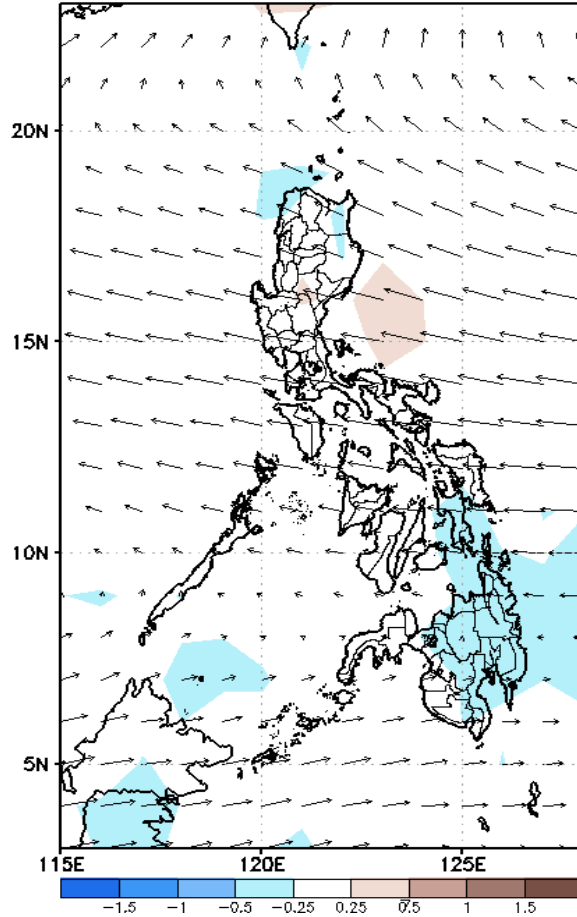
GEFS Week-1 Forecasts: Divergence & Wind Anomaly

Week 2: Apr 25- May 01, 2022

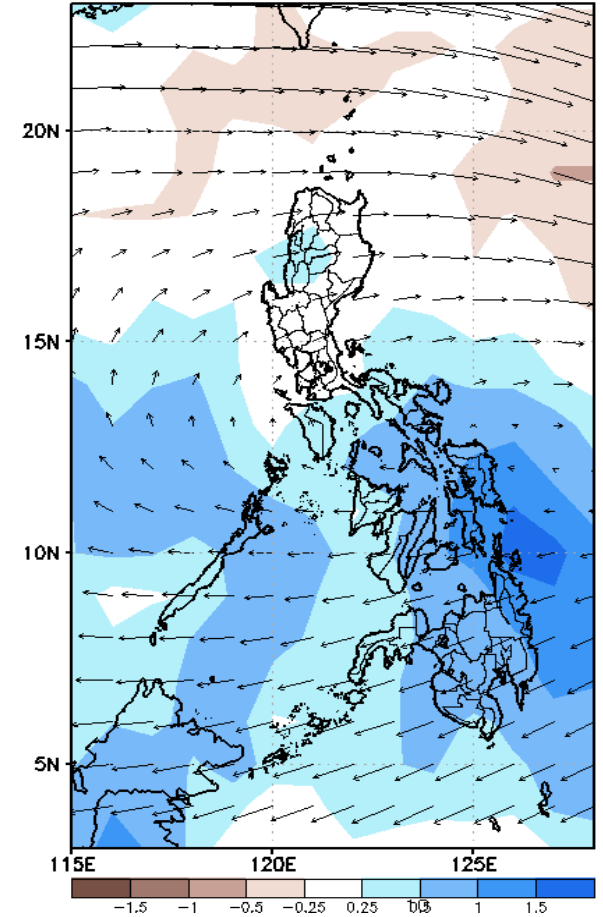
GEFS Week-1 850-hPa Divergence and Wind Anomaly
Valid: 20220425 - 20220501



GEFS Week-1 700-hPa Divergence and Wind Anomaly
Valid: 20220425 - 20220501



GEFS Week-1 200-hPa Divergence and Wind Anomaly
Valid: 20220425 - 20220501

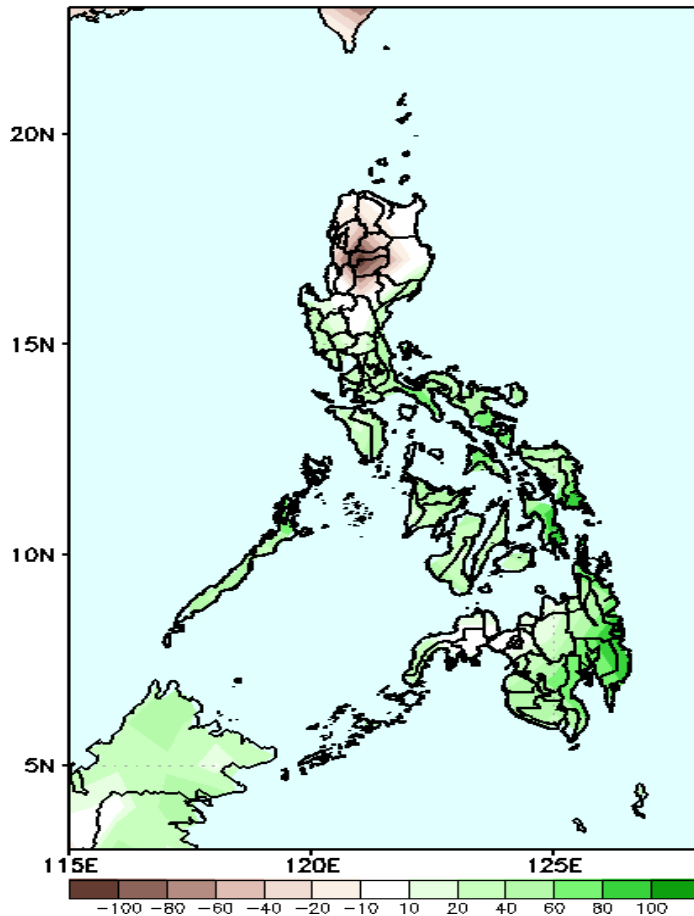


Upper and low level Divergence suggest a likelihood of light to moderate precipitation in some parts of CAR, Bicol region, Palawan, Western Visayas and most parts of Mindanao. Easterlies affecting most parts of the country attributing to warmer temperatures during the forecast period.

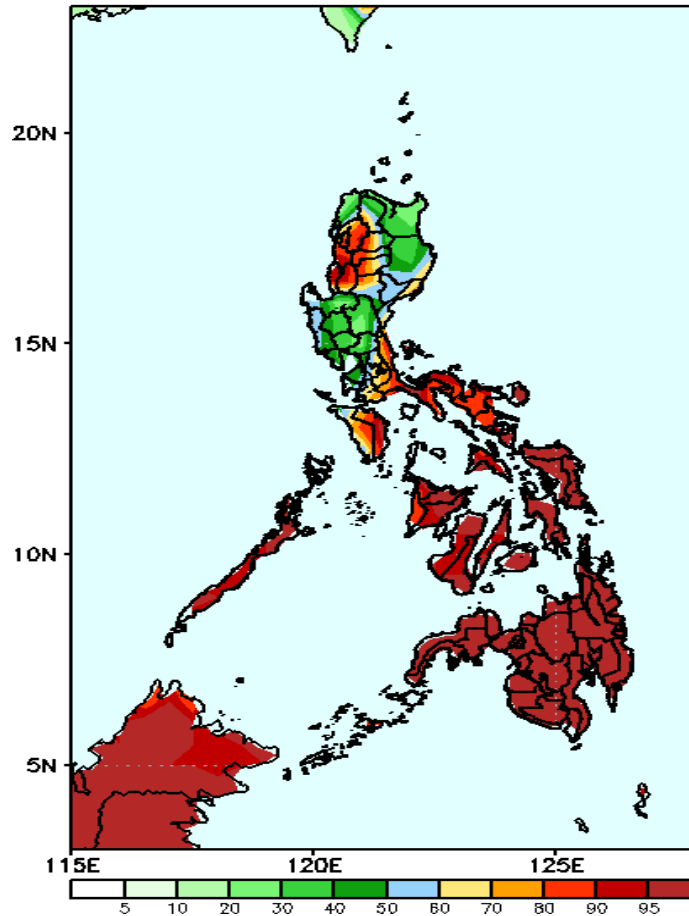
Precipitation Anomaly and Exceedance Probability > 25/50 mm

Week 2: Apr 25- May 01, 2022

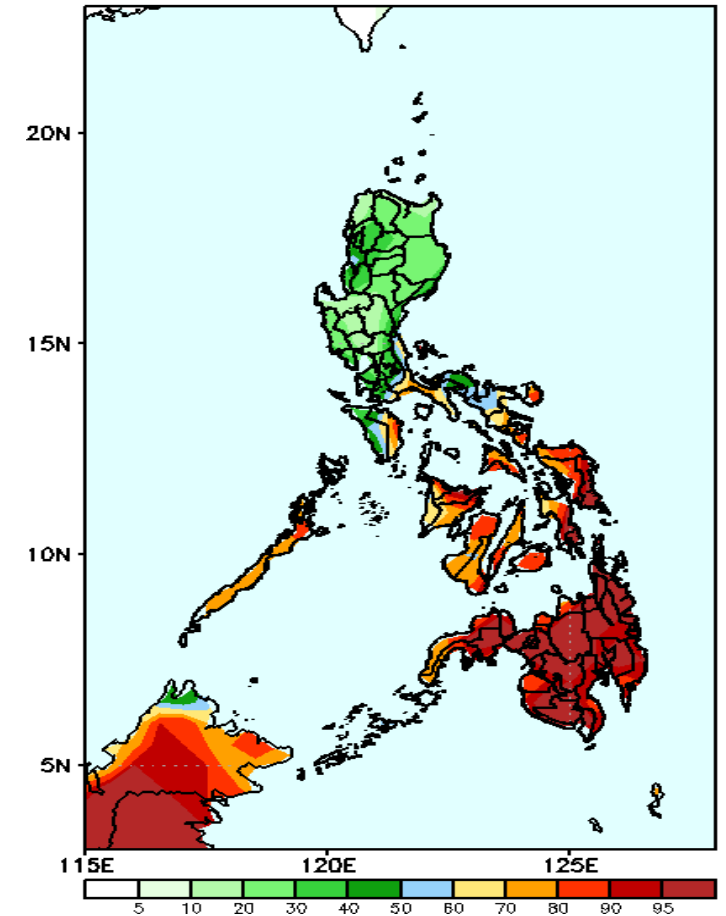
GEFS Week-1 Precip Anomaly
Valid: 20220425 - 20220501



GEFS Week-1 Exceedance Prob. > 25mm
Valid: 20220425 - 20220501



GEFS Week-1 Exceedance Prob. > 50mm
Valid: 20220425 - 20220501



Rainfall deficit of 40-80mm in most parts of Northern Luzon while 40-80mm increase of rainfall in the remaining southern Mindanao during the forecast period.

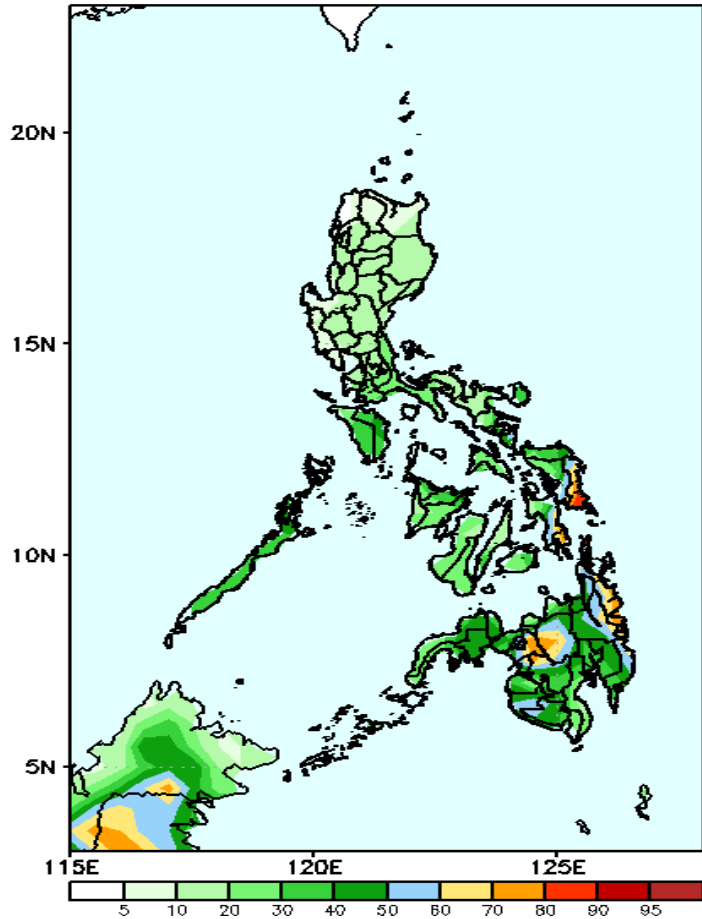
High probability of rainfall to exceed 25mm in most parts of the country except Ilocos Norte and most parts of Cagayan Valley and Central Luzon regions during the forecast period.

High probability of rainfall to exceed 50mm in most parts of Southern Luzon, Visayas and Mindanao while less likely for the rest of Luzon during the forecast period.

Exceedance Probability > 100/150/200 mm

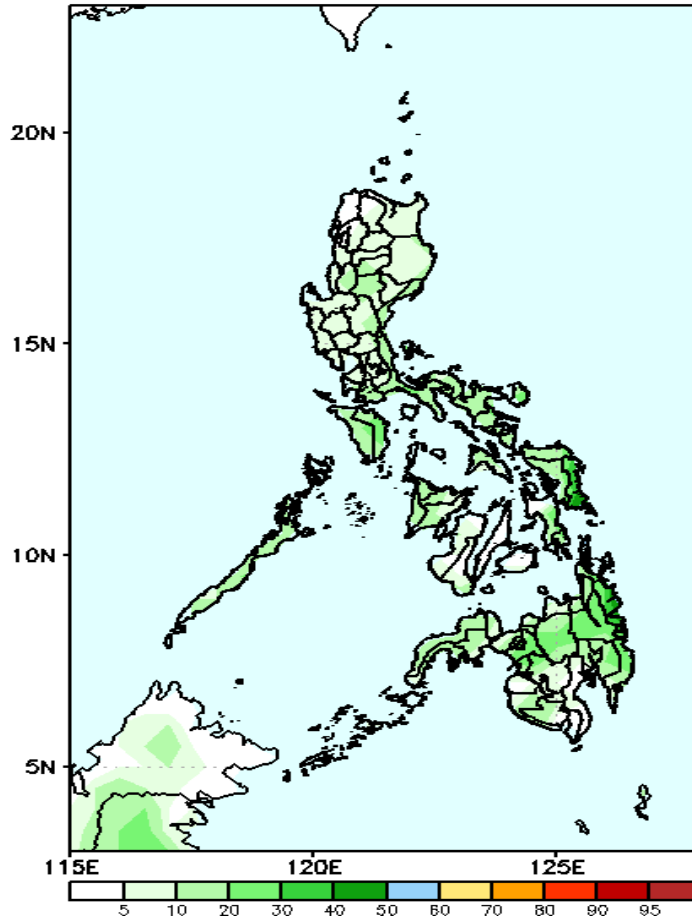
Week 2: Apr 25- May 01, 2022

GEFS Week-1 Exceedance Prob. > 100mm
Valid: 20220425 - 20220501



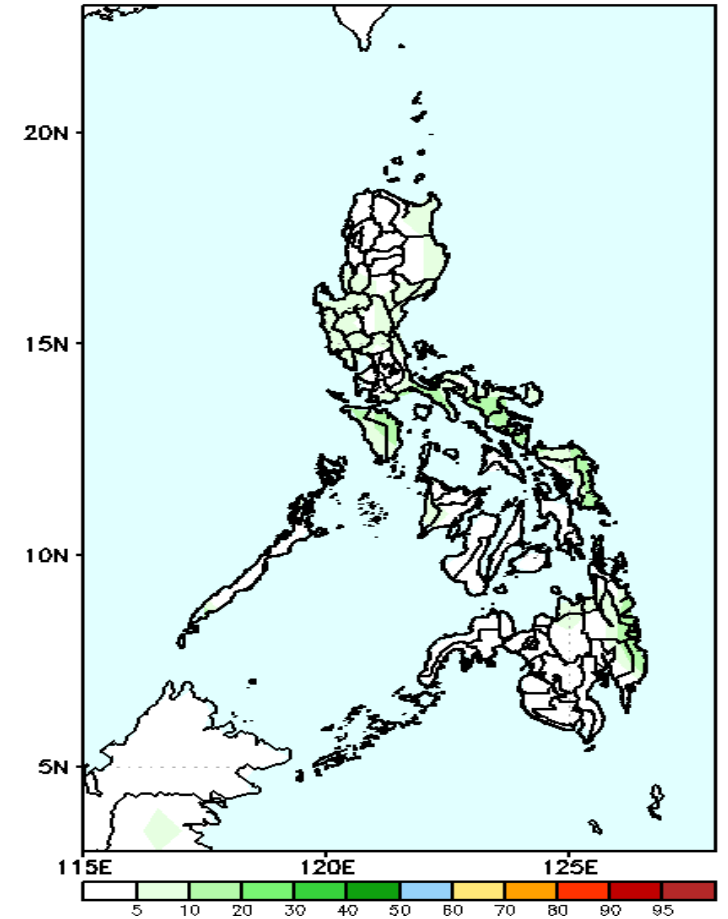
Low probability of rainfall to exceed 100mm in most parts of the country except in some areas of Eastern Visayas, CARAGA and Central Mindanao during the forecast period.

GEFS Week-1 Exceedance Prob. > 150mm
Valid: 20220425 - 20220501



Low probability of rainfall to exceed 150mm in most parts of the country during the forecast period.

GEFS Week-1 Exceedance Prob. > 200mm
Valid: 20220425 - 20220501



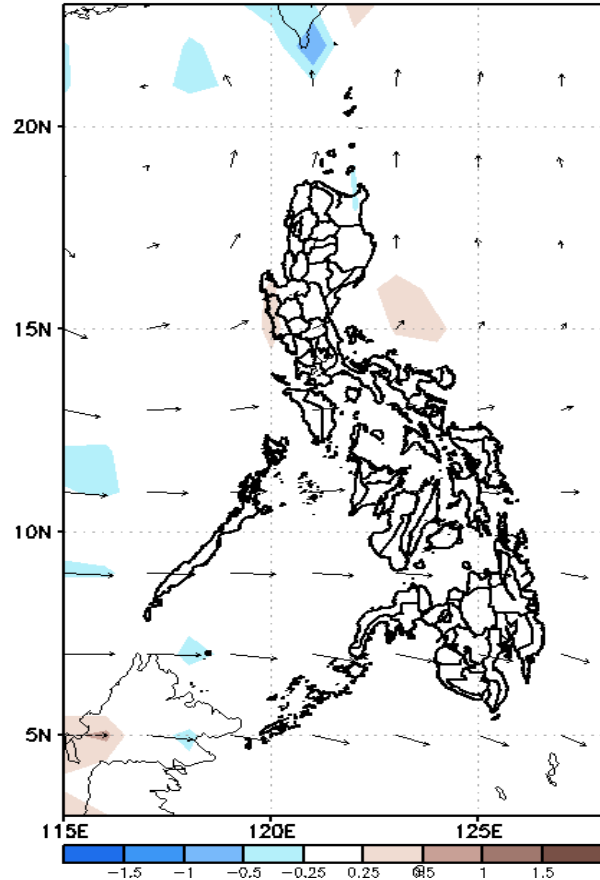
Low probability of rainfall to exceed 200mm in most parts of the country during the forecast period.



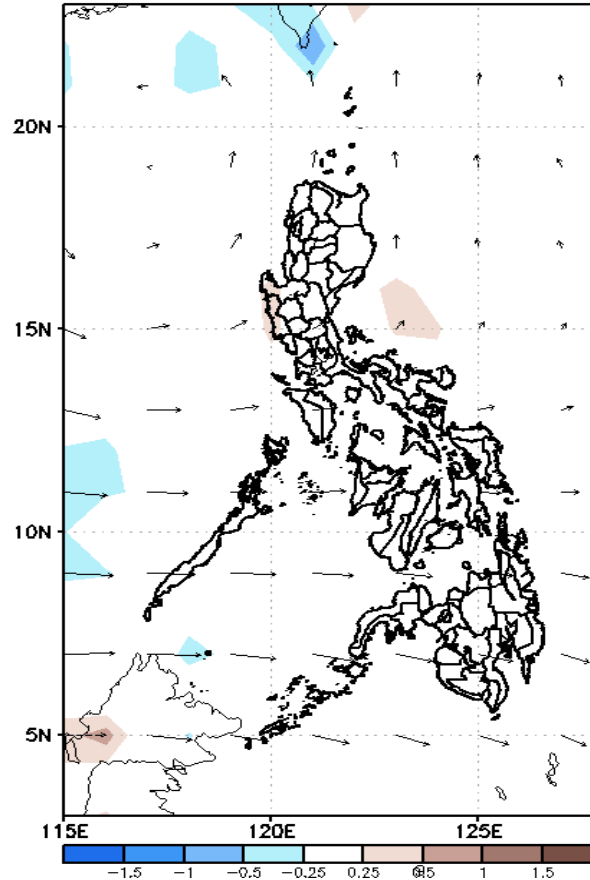
GEFS Week-2 Forecasts: Divergence & Wind Anomaly

Week 2: May 02 - May 08, 2022

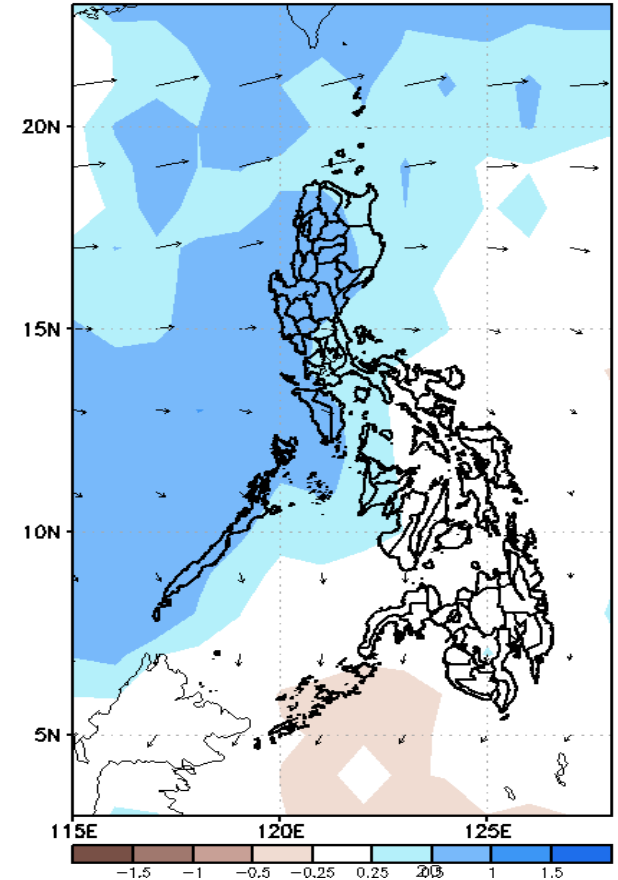
GEFS Week-2 700-hPa Divergence and Wind Anomaly
Valid: 20220502 - 20220508



GEFS Week-2 850-hPa Divergence and Wind Anomaly
Valid: 20220502 - 20220508



GEFS week-2 200-hPa Divergence and Wind Anomaly
Valid: 20220502 - 20220508

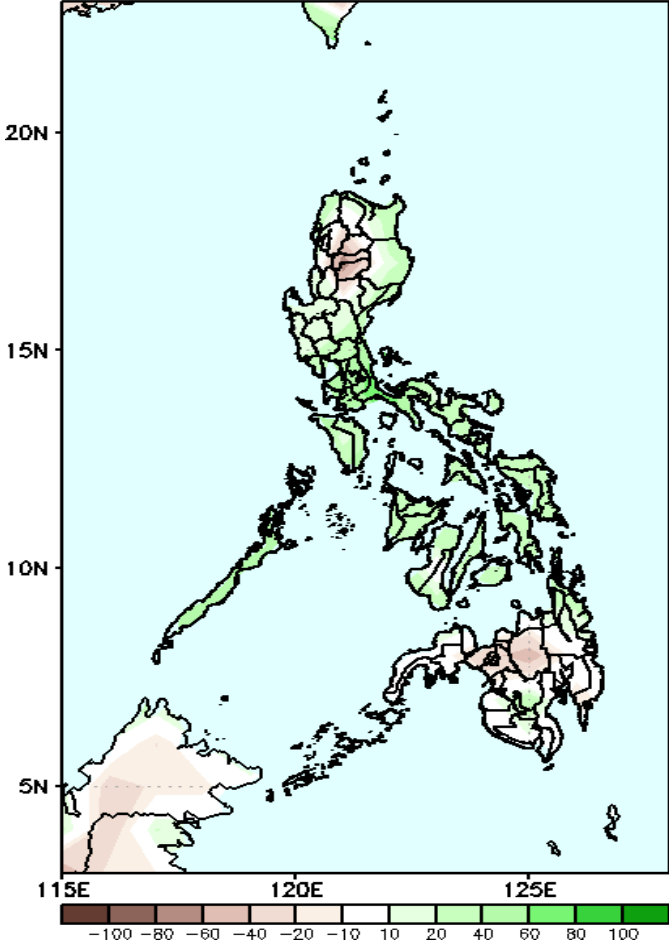


Upper and low level Divergence suggest a likelihood of light precipitation in most parts of Luzon and Panay. Easterlies affecting most parts of the country attributing to warmer temperatures during the forecast period.

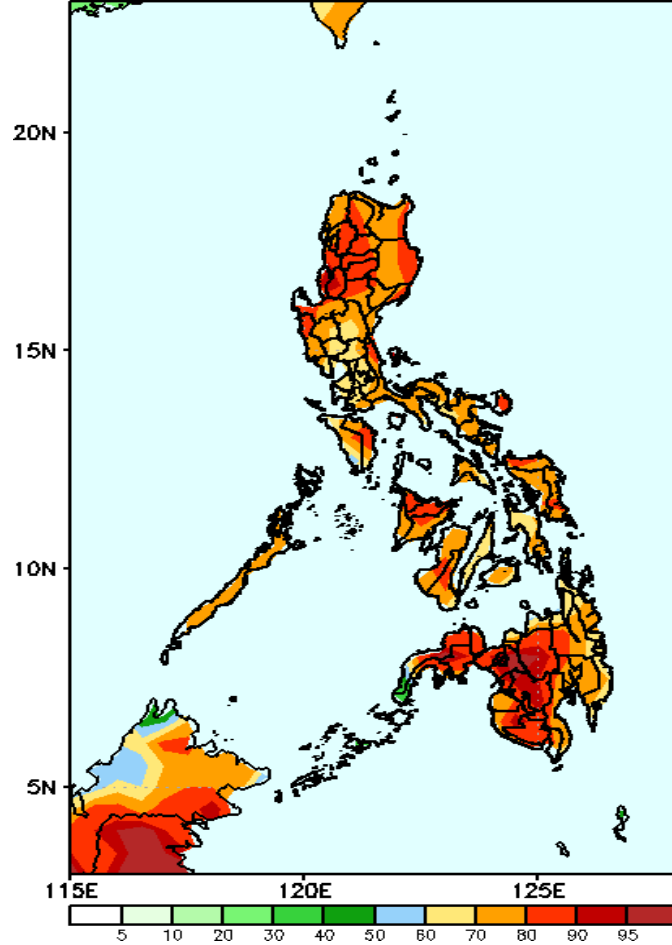
Precipitation Anomaly and Exceedance Probability > 25/50 mm

Week 2: May 02 - May 08, 2022

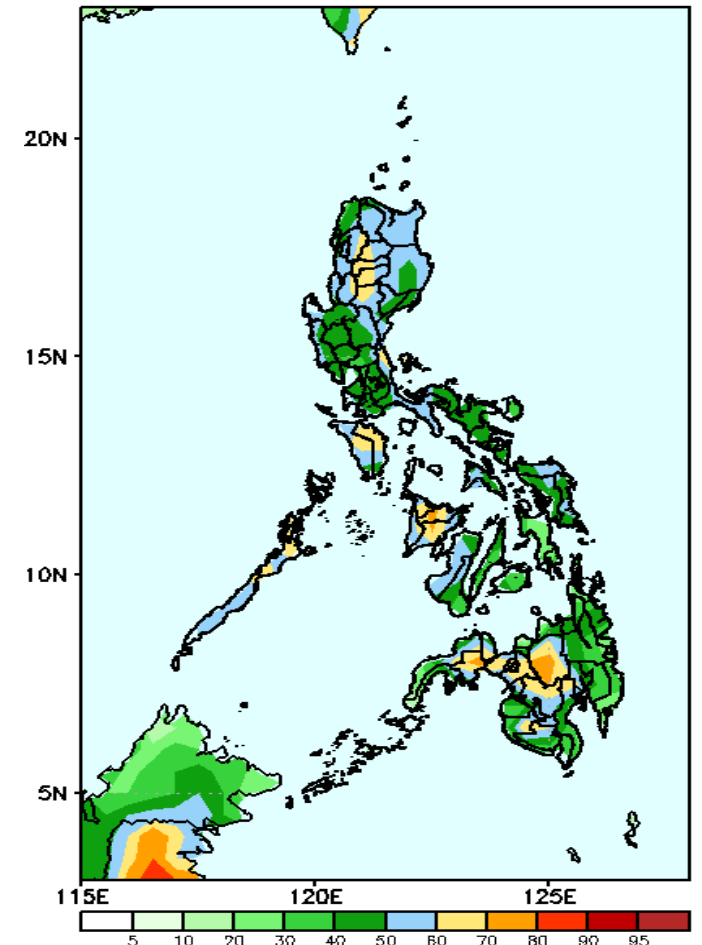
GEFS Week-2 Precip Anomaly
Valid: 20220502 - 20220508



GEFS Week-2 Exceedance Prob. > 25mm
Valid: 20220502 - 20220508



GEFS Week-2 Exceedance Prob. > 50mm
Valid: 20220502 - 20220508



Rainfall deficit of 20-40mm in most parts of CAR and most parts of Mindanao while 20-40mm increase of rainfall for the rest of the country during the forecast period.

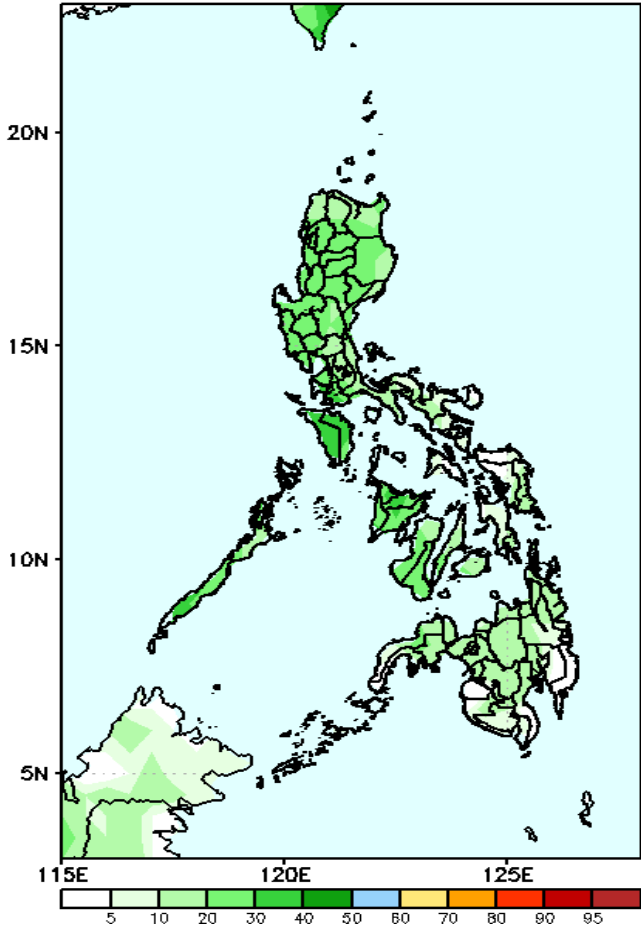
High probability of rainfall to exceed 25mm in most parts of the country during the forecast period.

Low probability of rainfall to exceed 50mm in most parts the country except for some areas in Northern Luzon, MIMARORA, Western Visayas, Zamboanga Sibugay and Central Mindanao during the forecast period

Exceedance Probability > 100/150/200 mm

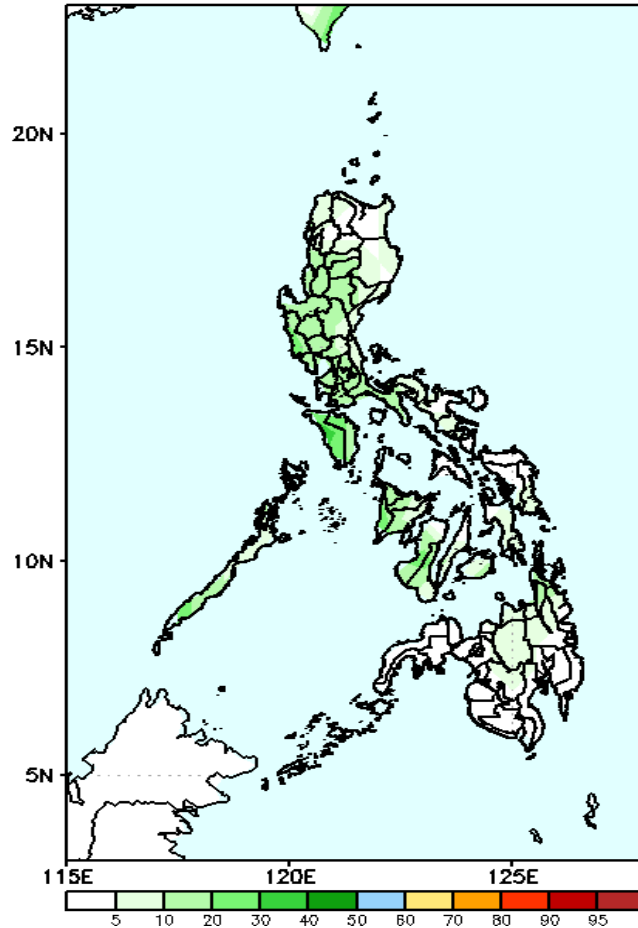
Week 2: May 02 - May 08, 2022

GEFS Week-2 Exceedance Prob. > 100mm
Valid: 20220502 - 20220508



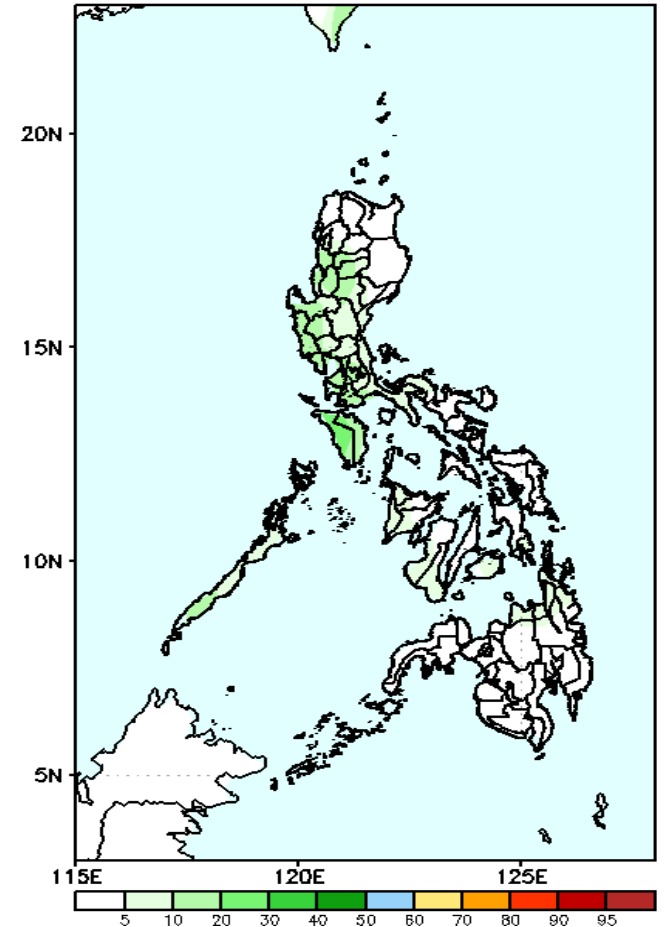
Low probability of rainfall to exceed 100mm in most parts of the country during the forecast period.

GEFS Week-2 Exceedance Prob. > 150mm
Valid: 20220502 - 20220508



Low probability of rainfall to exceed 150mm in most parts of the country during the forecast period.

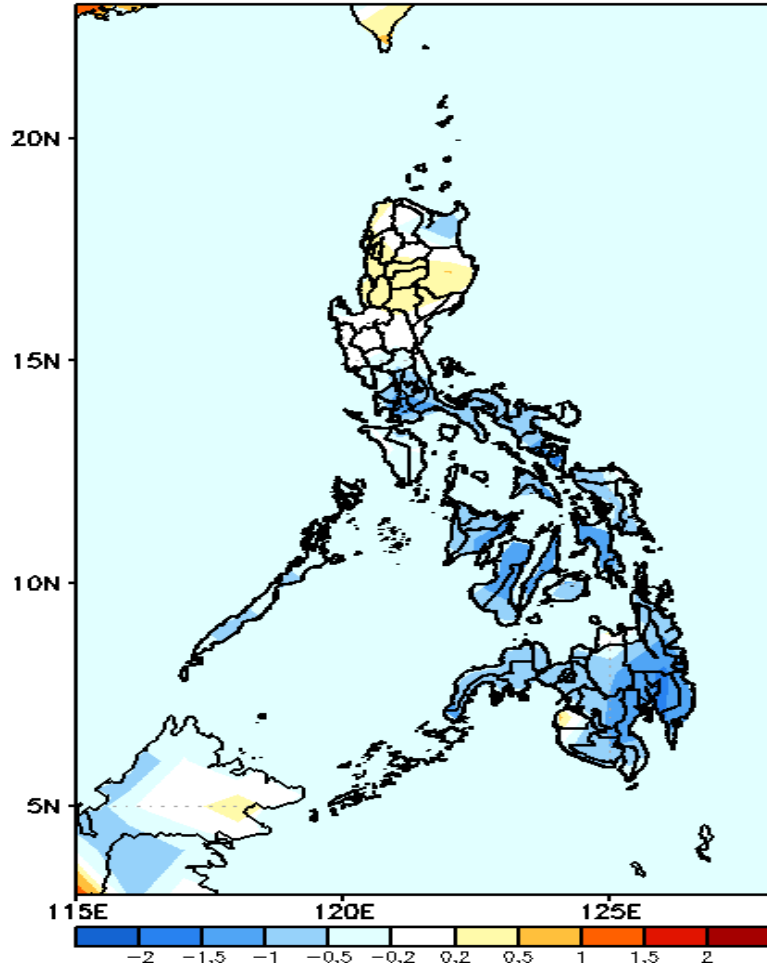
GEFS Week-2 Exceedance Prob. > 200mm
Valid: 20220502 - 20220508



Low probability of rainfall to exceed 200mm in most parts of the country during the forecast period.

GEFS Week-1 & 2 Forecasts: T2m Anomaly

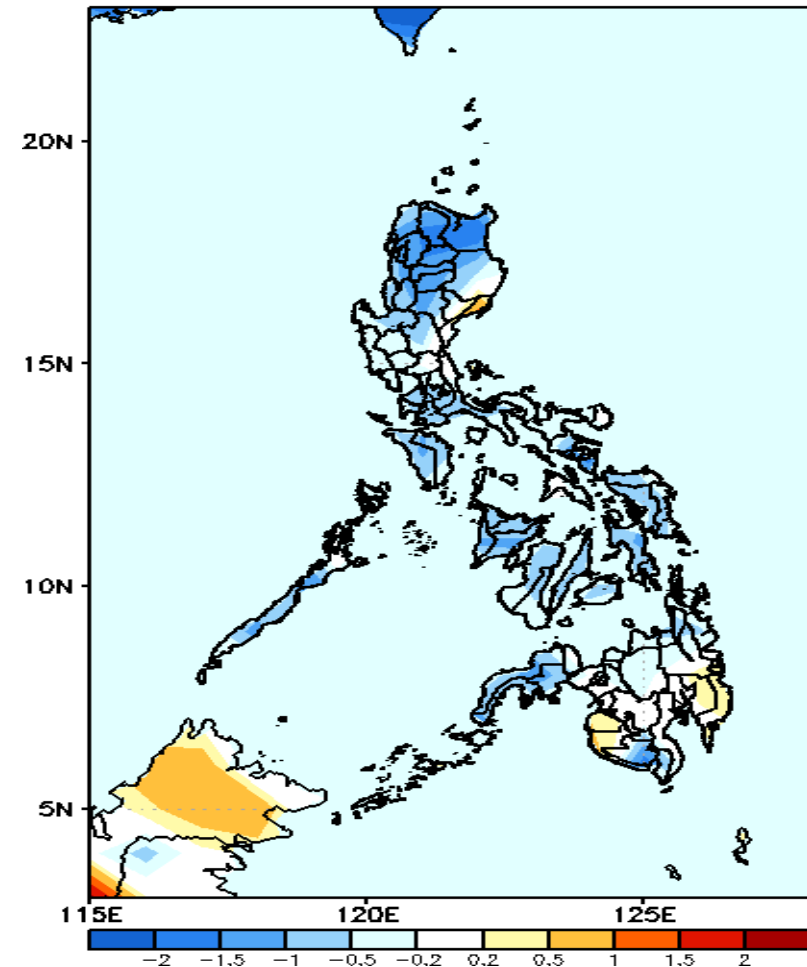
GEFS Week-1 T2m Anomaly
Valid: 20220425 - 20220501



2m Temperature Week 1: Apr 25-May 01, 2022

Slightly cooler to cooler than average surface air temperature will likely experience in most parts of the country except in Northern and Central Luzon where average to slightly warmer temperature is expected during the forecast period.

GEFS Week-2 T2m Anomaly
Valid: 20220502 - 20220508



2m Temperature Week 2: May 02 - May 08, 2022

Slightly cooler to cooler than average surface air temperature will likely experience in most parts of the country except Aurora, Davao Region, Maguindanao and Sultan Kudarat where slightly warmer temperature is expected during the forecast period.